

\$1,750,000 - 504 Rainbow Lane, Midway

MLS® #12104000

\$1,750,000

5 Bedroom, 6.00 Bathroom, 4,642 sqft
Residential on 0.45 Acres

Mountain Springs, Midway, UT

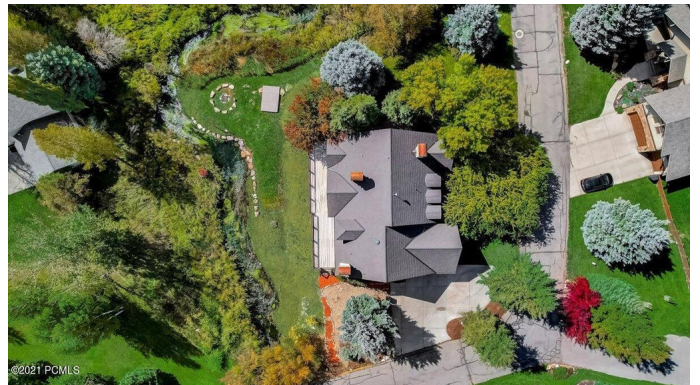
A chance to live in a private community on the 16th hole of the wonderful Homestead golf course nestled in lovely Mountain Springs, Midway UT. On the property you will find a great portion of Snake Creek flowing in your back yard and an HOA wetland area with a pond. This beautiful home has a great layout and the BEST location!!! Enjoy the most active lifestyle with a numerous amount of activities with just a bike ride or a short walk. The home is vacant and easy to show!!! Call Now for INFO OR SHOWING!!!!

Courtesy of: KW Park City Keller Williams

Built in 1991

Essential Information

MLS® #	12104000
Price	\$1,750,000
Bedrooms	5
Bathrooms	6.00
Full Baths	1
Half Baths	1
Square Footage	4,642
Acres	0.45
Year Built	1991
Type	Residential
Sub-Type	Single Family Residence
Style	Multi-Story
Status	Active



Community Information

Address	504 Rainbow Lane
Area	30 - Midway
Subdivision	Mountain Springs
City	Midway
County	Wasatch
State	UT
Zip Code	84049

Amenities

Utilities	Electricity Connected, Natural Gas Connected, Cable Available, High Speed Internet Available, Phone Lines/Additional, Propane
Parking Spaces	2
Garages	Attached, Heated Garage
View	Mountain(s), Trees/Woods, Woods, Meadow, Golf Course, Pond, Creek, Stream
Is Waterfront	Yes
Waterfront	Creek/River Front

Interior

Interior Features	Ceiling Fan(s), Vaulted Ceiling(s), Washer Hookup, Main Level Master Bedroom, Fire Sprinklers, Ceiling(s) - 9 Ft Plus, Dual Flush Toilet(s), Pantry, Walk-In Closet(s), Kitchen Island
Appliances	Dishwasher, Dryer - Electric, Oven, Refrigerator, ENERGY STAR Qualified Dishwasher, Disposal, Microwave, Washer/Dryer Stacked, Freezer, Indoor Grill, Gas Range, Washer - Front Load Energy Star Rated
Heating	Furnace - Energy Star Rated, Fireplace, Hot Water, Tankless Heating
Cooling	Air Conditioning, ENERGY STAR Qualified Equipment
Fireplace	Yes
# of Fireplaces	3
Fireplaces	Gas, Wood Burning, Fireplace

Exterior

Exterior	Stucco
Exterior Features	Deck(s), Lawn Sprinkler - Full, Patio(s), Porch
Lot Description	Natural Vegetation, Adjacent Common Area Land, Gradual Slope, Wooded/Partially
Roof	See Remarks
Construction	See Remarks

Foundation Concrete Slab, Wood

School Information

District Wasatch

Additional Information

Date Listed October 4th, 2021

Days on Market 20

HOA Fees 1000.00

HOA Fees Freq. Semi-Annually

The information provided is for consumers' personal, non-commercial use and may not be used for any purpose other than to identify prospective properties consumers may be interested in purchasing. All properties are subject to prior sale or withdrawal. All information provided is deemed reliable but is not guaranteed accurate, and should be independently verified.



The multiple listing information is provided by Park City Board of Realtors® from a copyrighted compilation of listings. The compilation of listings and each individual listing are © 2021 Park City Board of Realtors®, All Rights Reserved. Access to the multiple listing information through this website is made available by KW Park City Keller Williams as a member of the Park City Board of Realtors® multiple listing service. No other entity, including a brokerage firm or any franchisor, may be listed in place of the specific Listing Broker on the foregoing notice. Terms of Use: <https://www.realestateinparkcity.com/idx/terms-of-use.html>

Listing information last updated on October 24th, 2021 at 7:43pm MDT